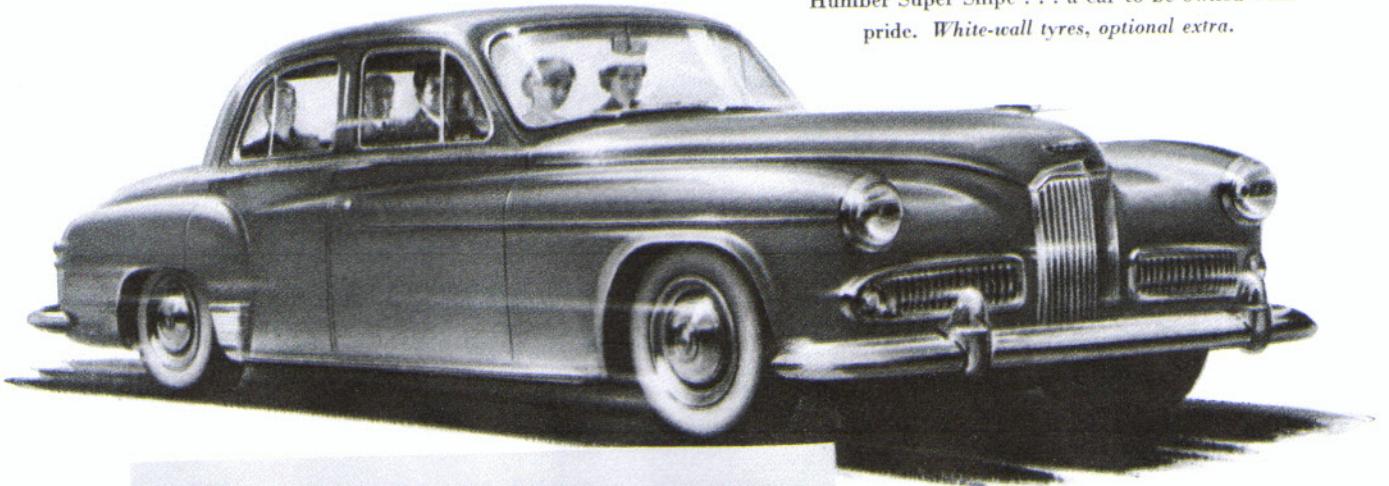


Power with a pedigree . . .

THE HUMBER *Super Snipe*

More power than you'll ever need . . . more comfort than you've ever dreamed of . . . more safety than really fast driving ever calls for . . . and doubly proved in record-breaking transcontinental trials. That is the Humber Super Snipe . . . a car to be owned with pride. *White-wall tyres, optional extra.*



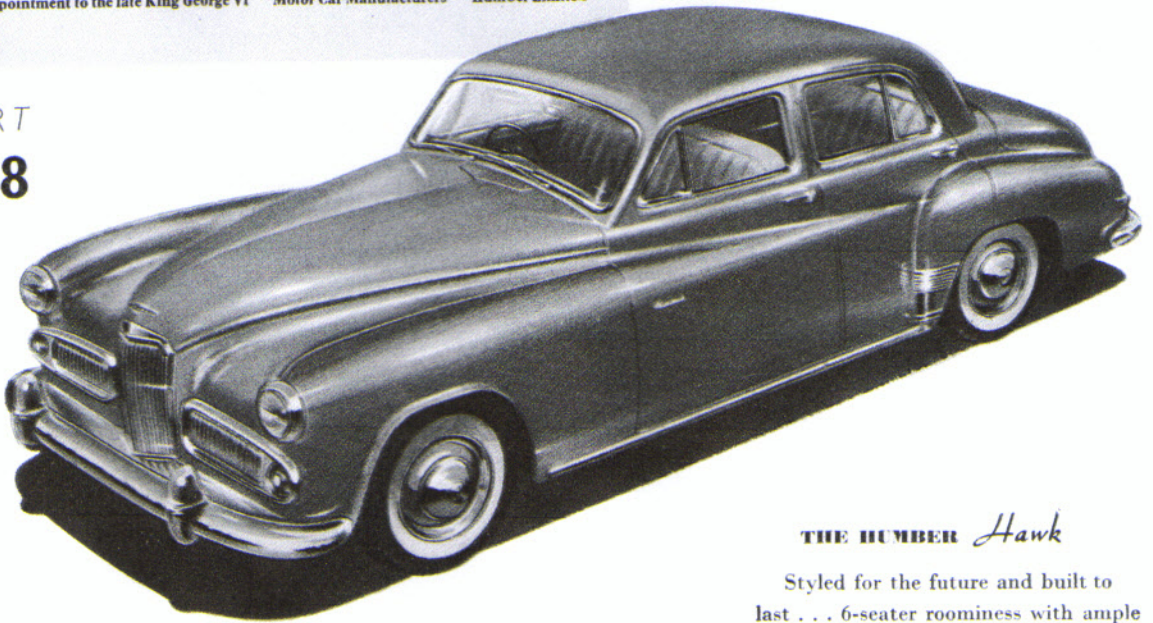
HUMBER

By Appointment to the late King George VI · Motor Car Manufacturers · Humber Limited

Also 8-passenger

PULLMAN LIMOUSINE & IMPERIAL SALOON
Coachwork by Thrupp & Maberley

EARLS COURT
Stand 148



THE HUMBER *Hawk*

Styled for the future and built to last . . . 6-seater roominess with ample luggage space . . . fine performance with low running costs . . . and Humber prestige in every line, Humber craftsmanship in every detail. *White-wall tyres and chromium rimfinishers, optional extras.*

Comfort beyond compare

ROOTES GROUP CARS MAKE A WONDERFUL SHOW!