

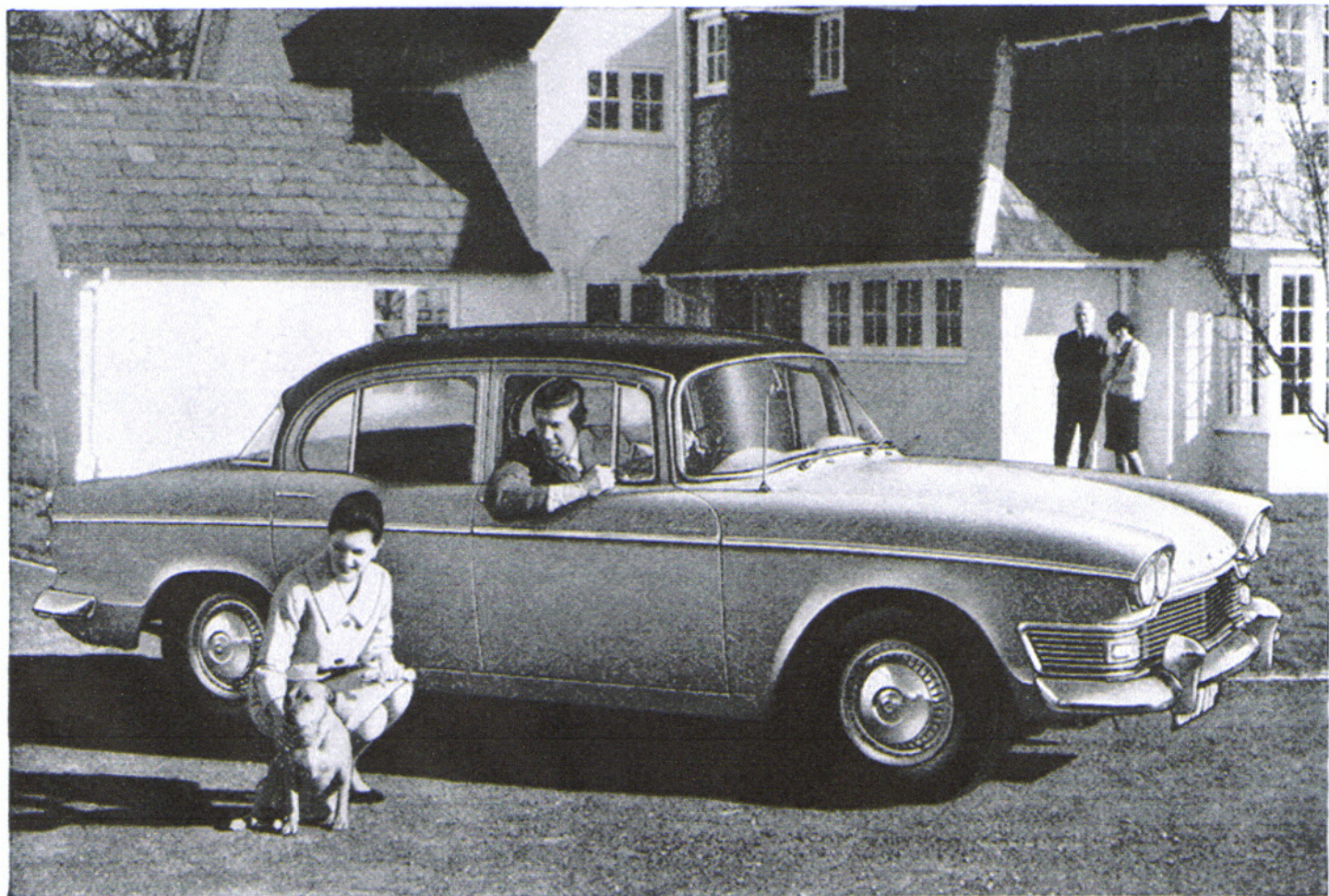
MASTERPIECE

A masterpiece in automobile engineering, and by any standards of coachwork and design, today's best-looking, most luxurious quality-car value. Its high-performance, fully-proven 3-litre engine, front disc and large rear brakes, and superb interior appointments, provide a standard of power, elegance, safety and silence

unrivalled by any other car approaching its price. £1050 plus purchase tax £438.12.6. Fully-automatic transmission, power-assisted steering, individual front seats and overdrive on normal transmission models are available as extras.

SEE ALSO THE LUXURIOUS
SUPER SNIPE SALOON AND ESTATE CAR MODELS

HUMBER SUPER SNIPE



- * OUTSTANDING SUSPENSION * DUAL HEADLAMPS * LUXURIOUS INTERIOR
- * ELEGANT EXTERIOR * FRONT DISC BRAKES * LARGE REAR BRAKES

ROOTES
MOTORS LIMITED

